



PV60
213

PORTWEST®

Workwear Range

CT65
170

C814
122

FW69
156

The Workwear collection offers a range of designs and fittings suitable for many end uses. Only the best quality fabrics and construction techniques are used guaranteeing comfort and safety. Tested to withstand the rigors of everyday wear, each garment has been carefully designed and manufactured to ensure optimum quality at the best price.

4 Industry Leading Workwear Fabrics



Kingsmill™ 100% cotton fabric is available in two weights: 5.5oz and 9oz. This fabric is fully pre-shrunk and has excellent dye retention properties. The long staple fibers used in the construction process provide strength, pilling resistance and a quality finish. This fabric has a UPF rating of 50+ so it will block over 98% of the UV rays which fall on the garment.



Kingsmill™ Polycotton is constructed from 65% polyester 35% cotton and is available in three weights: 4.5oz, 6oz and 7oz. This fabric guarantees high performance and maximum comfort. The yarns are ring spun with long staple combed cotton providing a smooth handle and excellent pilling resistance. The material is fully pre-shrunk and has superior dye retention. A UPF rating of 50+ will block over 98% of UV rays.

Kingsmill Plus is available in 4.5oz. It has the added benefit of a durable press finish and is industrially launderable.



Kingsmill™ Cotton Stretch is a premium cotton stretch fabric. A blend of 98% cotton and 2% elastane provides the ultimate in comfort and flexibility. The high cotton content gives an ultra soft handle, and the added elastane delivers ease of movement. The long staple fibers used in the construction process provide strength, excellent pilling resistance and a superior finish. This fabric has a UPF rating of 50+ to block 98% of UV rays.



Portwest's innovative two way **Kingsmill™ Polycotton Stretch** fabric is constructed from 65% polyester, 35% cotton. This premium workwear fabric offers excellent abrasion and tear resistant properties whilst the mechanical stretch function ensures full ease of movement for the wearer. A UPF rating of 50+ on this fabric blocks 98% of the UV rays.

KINGSMILL IS A TRADEMARK OF PORTWEST.



The Iona™ Xtra collection combines practical designs with reflective taping and contrast fluorescent material for extra visibility in low light conditions. Advanced construction techniques have been used, guaranteeing choice, comfort and ultimate wearer durability.

IONA IS A TRADEMARK OF PORTWEST.

ENHANCED VISIBILITY SHIRT

INNOVATIVE TEXPEL FINISH TO REPEL DIRT AND STAINS



F124

Iona Xtra Short Sleeve Shirt



5.5oz

- 2" yellow/silver reflective tape
- 6 button front closure with stud at neck
- Pockets: 2 front with button closure
- Bartack pencil stall on left pocket
- Lined collar with sewn in stays



Kingsmill: 65% Polyester, 35% Cotton, 5.5oz Navy, M-5XL



F125

Iona Xtra Long Sleeve Shirt



5.5oz

- 2" yellow/silver reflective tape
- 6 button front closure with stud at neck
- Pockets: 2 front with button closure
- Bartack pencil stall on left pocket
- Lined collar with sewn in stays
- Adjustable button closure cuffs



Kingsmill: 65% Polyester, 35% Cotton, 5.5oz Navy, M-5XL



POLYESTER/COTTON COVERALL

100% COTTON COVERALL



New



New



New

F127

Iona Xtra Work Pants



7oz

- 2" yellow/silver reflex tape for increased visibility
- Bartacked at all stress points
- Pockets: 2 front, 2 leg, 2 rear with hook and loop fastening tabs
- Side leg cargo pockets for extra storage

Kingsmill: 65% Polyester, 35% Cotton, 7oz Navy - 28"-52" with adjustable leg length from Reg (31") to Tall (33")



52"

F128

Iona Xtra Coverall



7oz

- 2" yellow/silver reflex tape for increased visibility
- Polyester/Cotton durable twill
- Front snap closure with 2 way zipper
- Pockets: 2 zipped chest, 2 side pass through, 1 ruler, 1 sleeve pen, 2 rear with one zipper closure and 2 knee
- Action back for comfort
- Snap adjustable cuffs
- 2 Mic tabs

Kingsmill: 65% Polyester, 35% Cotton, 7oz Navy S-6XL



6XL

F129

Iona Xtra Cotton Coverall



5.5oz

- 2" yellow/silver reflex tape for increased visibility
- 100% cotton for all day comfort
- Front snap closure with 2 way zipper
- Pockets: 2 zipped chest, 2 side pass through, 1 cell phone, 1 ruler, 1 sleeve pen and 1 rear
- Action back for comfort
- Mic tab

100% Cotton, 5.5oz Navy S-6XL



6XL



Be Safe, Be Seen

F130

Iona Xtra Enhanced Hoodie



9oz

- 2" yellow/silver reflex for increased visibility
- Pockets: 2 front pockets
- Adjustable hood for varied weather conditions, with stylish inner contrast
- Elasticated rib waistband and cuffs
- Generous fit

65% Polyester, 35% Cotton, 9oz
Navy S-6XL

6XL



Back of hoodie

High Performance Wicking Fabric

F131

Iona Xtra Enhanced T-Shirt



5oz

- 2" yellow/silver reflex for increased visibility
- 100% polyester moisture wicking fabric
- 50+ UPF rated fabric to block 98% of UV rays
- Pocket: 1 left chest pocket

100% Polyester, 5oz
Navy S-6XL



Back of T-Shirt

IONA™

The Iona collection combines practical design and colors with reflective taping which gives extra visibility in outdoor conditions. The garments have a relaxed fit for ease of movement. Reactive dyes used offer rich color retention.



B307

Iona Sweatshirt

24 50+ UPF

9oz

- 2" silver reflective tape
- Polycotton fabric for extra comfort
- Elasticated rib waistband and cuffs
- Crew neck
- Generous Fit

65% Polyester, 35% Cotton, 9oz
Black, Navy, M-6XL

6XL

B307



E046
66

Enhanced Visibility for Maximum Safety

F477

Iona Polo Shirt

48 50+ UPF

5oz

- 2" silver reflective tape
- 100% polyester moisture wicking fabric
- Taped neck seam for extra comfort
- Generous fit

100% Polyester,
Bird Eye Knit, 5oz
Black, Navy, M-6XL

TEXPEL™
WICKING

6XL



Functionality, Performance and Comfort Combined

C814 Iona Cotton Coverall



5.5oz



COLOR OPTIONS

- Lightweight 100% cotton for ultimate comfort
- Front snap closure with 2 way zipper
- 2" silver reflective tape
- Pockets: 2 zipped chest, 2 side pass through, 1 cell phone, 1 ruler, 1 sleeve pen and 1 rear
- Action back for comfort
- Mic tabs



100% Cotton, 5.5oz
Navy, Orange, Khaki, Gray, Red, Royal



	Reg
Navy	S - 6XL
Orange	S - 6XL
Khaki	S - 3XL
Gray	S - 3XL
Red	S - 3XL
Royal	S - 3XL





F813

Iona Polycotton Coverall



7oz

- Front snap closure with 2 way zipper
- Pockets: 2 zipped chest, 2 side pass through, 1 ruler, 1 sleeve pen, 2 rear with one zipper closure and 2 knee
- Action back for comfort
- Snap adjustable cuffs
- 2 Mic tabs
- 2" silver reflective tape

Kingsmill: 65% Polyester, 35% Cotton, 7oz Navy S-4XL Reg



C813

Liverpool Zipper Coverall



7oz

- Front snap closure with 2 way zipper
- Pockets: 2 zipped chest, 2 side pass through, 1 cell phone, 1 ruler, 1 sleeve pen and 1 rear
- Action back for comfort
- Mic tab
- Available in Regular or Tall fit

Kingsmill: 65% Polyester, 35% Cotton, 7oz Navy, Royal, Red, Black, Graphite Gray, Orange



	Reg	Tall
Navy	S - 6XL	M-3XL
Orange	S - XXL	-
Black	S - 3XL	-
Graphite Gray	S - XXL	-
Red	S - 3XL	-
Royal	S - 3XL	-



POLYESTER/COTTON COVERALL

USA BEST SELLER



MASSIVE USA STOCK



NEW COLOR

S999

Euro Work Polycotton Coverall



60Z

- Front snap closure
- Pockets: 2 chest, 1 rear, 1 ruler
- 2 side pass through pockets
- Elasticated back waist
- Available in Regular or Tall fit



Kingsmill: 65% Polyester, 35% Cotton, 60z



Navy, Royal, Red, Bottle Green, Zoom Gray

KINGSMILL POLY-COTTON

6XL

	Reg	Tall
Navy	XS - 6XL	S-3XL
Royal	S - 3XL	
Red	S - XXL	
Bottle Green	S - XXL	
Zoom Gray	S - XXL	

TOP QUALITY, Easy Care Fabric



4.5oz

S124

Industrial Work Shirt



- 6 button front closure with snap at neck
- Pockets: 2 front with button closure
- Bartack pencil stall on left pocket
- Lined collar with sewn in stays
- Industrial wash, durable press with Texpel finish



Kingsmill Plus: 65% Polyester, 35% Cotton 4.5oz
 Navy S-5XL Reg
 Gray M-5XL Reg



4.5oz

S125

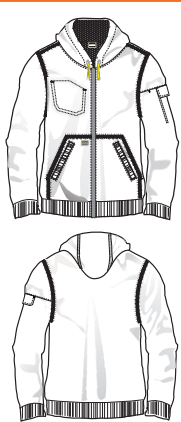
Industrial Work Shirt



- 6 button front closure with snap at neck
- Pockets: 2 front with button closure
- Bartack pencil stall on left pocket
- Lined collar with sewn in stays
- Adjustable button closure cuffs
- Industrial wash, durable press with Texpel finish



Kingsmill Plus: 65% Polyester, 35% Cotton 4.5oz
 Navy S-5XL Reg
 Gray M-5XL Reg



UKS32

Pewter Jacket



- Polyester and Cotton outer fabric
- Sherpa pile lining around the torso area
- Lightly padded sleeves
- Front full zipper
- Lightly insulated sleeves
- Pockets: 2 front pouch, 1 sleeve, 1 internal
- Print access for garment customization



65% Polyester, 35% Cotton, 8oz
 Sleeve Lining: 100% Polyester 2oz
 Main Body: 100% Polyester Sherpa Pile, 9oz
 Sleeve Filling: 100% Polyester Wadding, 1oz
 Black M-XXL



6oz

S790

11" Cargo Shorts



- Double stitched robust seams
- Bartacked at all stress points
- Pockets: 2 side, 2 leg, 2 rear
- Handy waistband D-ring



Kingsmill: 65% Polyester, 35% Cotton, 6oz
 Dark Navy XS-3XL



6 pockets for ample storage



KINGSMILL™
COTTON
STRETCH

SLIM FIT
LEG



FW57
156

S231
Stretch Slim Combat Pants

36 | 6 | 50+ UPF

7.5oz

- Stretch fabric gives the ultimate in comfort and freedom of movement
- Pockets: 2 side, 2 rear, 2 leg
- Side leg cargo pockets for extra storage
- Bartacked at all stress points

Kingsmill Cotton Stretch: 98% Cotton, 2% Elastane, 7.5oz
 X Black, Dark Navy - 28"-46" Reg

KINGSMILL™
COTTON
STRETCH



KINGSMILL™
POLY-COTTON
STRETCH

SLIM FIT
LEG



T802
KX3 Ripstop Stretch Pants

24 | 50+ UPF | 14

7oz

- Durable ripstop fabric
- Knee articulation for more freedom of movement
- High rise back waistband
- Adjustable leg length
- Pockets: 4 hip, 2 back, 4 leg, 1 cell phone, 1 ankle and 2 knee

Kingsmill Poly-cotton Stretch: 65% Polyester, 35% Cotton Ripstop Weft Stretch, 7oz
 X Black, Dark Navy, Sand 28" to 48" with adjustable leg from Reg (31") to Tall (33")

KINGSMILL™
POLY-COTTON
STRETCH



KINGSMILL™
POLY-COTTON



C701
Cargo Pants

36 | 50+ UPF | 6

7oz

- Bartacked at all stress points
- Pockets: 2 front, 2 leg, 2 rear with hook and loop fastening tabs
- Side leg cargo pockets for extra storage
- Available in Regular and Tall fit

Kingsmill: 65% Polyester, 35% Cotton, 7oz
 X Dark Navy 30"-52" Reg, 30"-48" Tall
Black 30"-48" Reg, 30"-48" Tall

KINGSMILL™
POLY-COTTON



This modern range will meet all your painting and plastering needs. The durable cotton fabric is absorbent and has been pre-shrunk to ensure that these garments maintain their shape wash after wash. Garments are designed with a comfort fit and include several handy pockets for secure storage.



Ideal for All Painting and Plastering Jobs

Side View



**100%
Cotton For
Comfort and
Durability**

Full
Range
of Kneepads
234

S817 Painters Pants



9oz

- Pockets: 2 side, 2 knee, 1 rear, 2 leg, 1 ruler
- Half elasticated waist
- Designed with a comfort fit
- Available in Regular or Tall fit

100% Cotton, 3111, Pre-Shrunk, 9oz
 White S-3XL Reg, S-3XL Tall



S810 Bolton Painters Bib



9oz

- Pockets: 1 zipped chest, 2 side pass through, 1 front, 1 multi storage, 2 knee, 1 rear
- Elasticated shoulder straps
- Designed with a comfort fit

100% Cotton, 3111, Pre-Shrunk, 9oz
 White XS-4XL

